



# QUARTERLY **CONNECTION**

A NIBS MEMBER NEWSLETTER

JANUARY 05, 2021

## TOPICS INSIDE

- **Page 1-4**    **FEATURE STORY**
- **Page 5-6**    **WOMEN EXECUTIVES IN BUILDING**
- **Page 6-9**    **COUNCIL COLUMNS  
& NIBS IN THE NEWS**
- **Page 9**      **OBSERVANCES**

**NIBS.ORG**

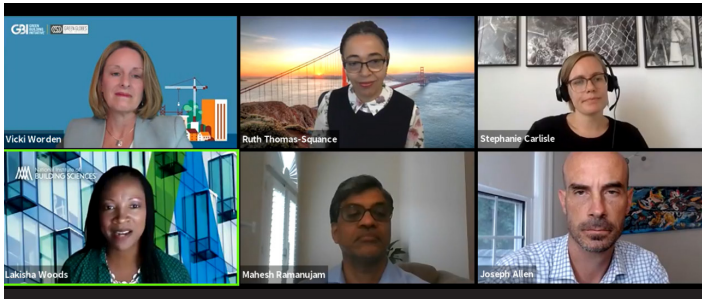
## NEWS HIGHLIGHT

### **2020 Recap: Navigating the Built Environment Through Virtual Meetings**

Talk about a year of building resilience.

The very nature of what the National Institute of Building Sciences does – convening experts and officials from across the industry to find solutions to building issues – was challenged throughout 2020. Aside from essential workers, the pandemic kept much of the country at home, figuring out ways to keep business moving and forging ahead.

It's been a difficult year for many, and we stand with all those affected and whose communities and challenges have been and remain tremendous. COVID-19 forced us to confront a disease that threatened to take down so much of what this country has built: Our foundation.



## COVID RESOURCE PORTAL AND TOWN HALLS

NIBS immediately launched a **COVID-19 & Healthy Buildings Portal** personally curated by our team and housed on the **Whole Building Design Guide**. The goal was to build a resource for those looking for recent developments. These developments, as they related to the built environment, included financial assistance information, webinars and events, continuing education, and other impacts of the coronavirus on the building sector.

By May, NIBS launched a series of **COVID-19 virtual town halls** that covered the spectrum of building safety and returning to indoor spaces.

Our expert panelists discussed:

- **Preparing for Reentering Buildings**
- **Mental Health and Sanitation of COVID-19 Facilities**
- **The Future of Design and Construction**
- **Healthy Buildings and the Effect on Public Health**

In the U.S., there have been many epidemics that were near-pandemics, and buildings play a key role in either protecting us or exacerbating problems.

“This is not rocket science, we’ve long known how to operate our buildings effectively,” said Joseph G. Allen, Assistant Professor with the Harvard T.H. Chan School of Public Health, in August.



## WOMEN EXECUTIVES IN BUILDING

Also in May, NIBS hosted the first session of the Women Executives in Building: Virtual Leadership Series. Throughout the year, this leadership series has been attended by female leaders in the built environment.

We invite women in the C-suite in the built environment to come together, share ideas, and discuss solutions to a variety of pressing issues.

Women executives in the built environment must support each other and share thoughts on providing value and leadership. Many of these leaders are working from home, while managing and keeping teams inspired and motivated and also running households and/or homeschooling children.

In 2020, our leadership series covered:

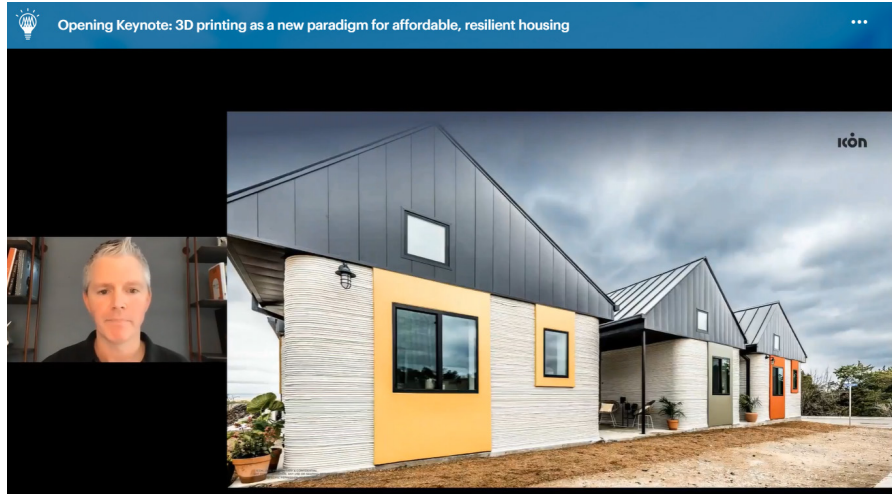
- Productivity: Serving Your Respective Customers in a Time of Crisis
- Workforce Development: Current Strategies That Will Help Increase Diversity and Inclusion
- The Secret to Balancing Work and Life Outside of the Office
- Advancing Women to Achieve Parity in Leadership
- Mentorship and Its Impact on Career Growth

For 2021, the series is sponsored by 84 Lumber and the NIBS team is preparing for another successful series for the Women Executives in Building.

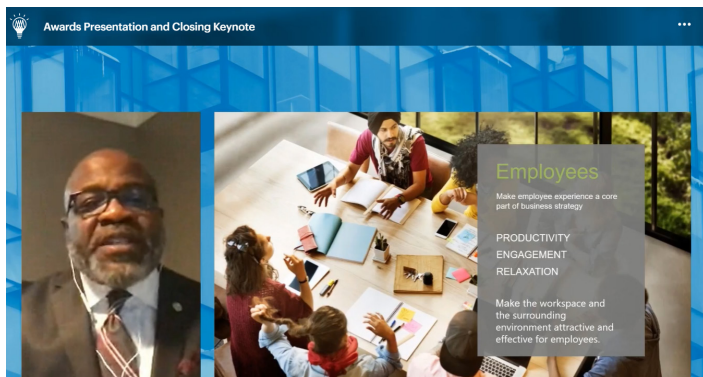
## THE VIRTUAL ANNUAL CONFERENCE

NIBS hosted Building Innovation 2020: Virtual Edition on August 18-19.

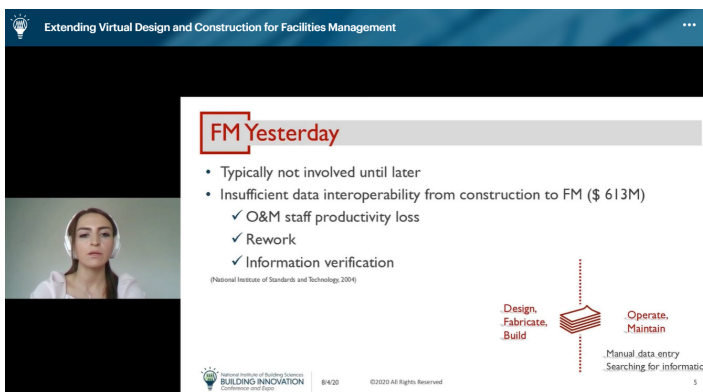
We received more than 1,000 registrants – representatives from 45 countries worldwide – to our annual meeting. BI2020 brings together architects, engineers, code officials, manufacturers, innovators, public and private sector representatives, officials from building and construction, and local, state and government leaders. Educational sessions covered a spectrum of developments in the areas of workforce, technology, resilience, and the challenges that COVID-19 brings to the built environment.



BI2020 Keynote Speaker Evan Loomis, Co-Founder and Chairman with Austin-based ICON, opened up the conference with his presentation: 3D Printed Homes for Affordable and Resilient Housing.



Corporate social responsibility and sustainability leader George Bandy Jr. closed Day 1 of BI2020 with a powerful talk on the Courage and Genius of Sustainability.



VIATechnik VDC Engineer Marjan Sadeghi, PhD, presented on Extending Virtual Design and Construction for Facilities Management.



National Institute of Building Sciences  
**BUILDING INNOVATION**  
Virtual Edition

The event received generous support, partnering with the International Code Council, Dell Technologies, American Institute of Architects, International Association of Plumbing and Mechanical Officials, National Ready Mixed Concrete Association, Willseal by Tremco, ePIPE Plumbing and Pipe Restoration, SMT Research, The Marshall Group, and Autodesk.

**THANK YOU TO OUR SPONSORS**












## 2020 Highlights: Our Year in Numbers

### Events

#### Building Innovation 2020

Virtual Edition registrants

**1,007**

Tracks



Resilience

Number of sessions

**16**



Workforce

Number of speakers

**31**



Technology

#### COVID Town Halls

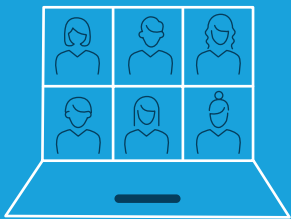


COVID-19 Town Halls

**4**

Total number of registrants

**4,412**



Number of WEB Virtual Leadership Meetings

**5**

### Coverage



News stories featuring NIBS in 2020

**153**

Total combined readership of 2020 news stories

**1.914 billion**

Total estimated social shares of NIBS stories

**17,710**

#### Social Coverage



Total 2020 Twitter impressions

**310,300**



Followership growth, from January 2020

**+77%**



Followership growth, from January 2020

**+102%**

### Top Stories

**1**

CNN

608 million monthly visits;  
448,000 estimated coverage views

**2**

Weather.com

513 million monthly visits;  
593,000 estimated coverage views

**3**

Yahoo Finance

255 million monthly visits;  
259,000 estimated coverage views

**4**

Yahoo Finance

163 million monthly visits;  
166,000 estimated coverage views

**5**

The Washington Post

218 million monthly visits;  
194,000 estimated coverage views



@bldgsciences  
FOLLOW>>



@bldgsciences  
FOLLOW>>



LINKEDIN  
FOLLOW>>

## WOMEN EXECUTIVES IN BUILDING

### 84 Lumber's Dinelle on Teamwork: "Surround Yourself with Good People"

Early in Judy Dinelle's career, she pursued semi-professional softball. For many reasons, Dinelle walked away from that path, but among her reasons: She knew she wasn't going to make a good living.

Today, Dinelle serves as the building ambassador for 84 Lumber Company, a woman-owned and -operated building materials supply company. Based in Eighty Four, Pennsylvania, 84 Lumber manages 250 stores in 31 states and employs 5,700 people.

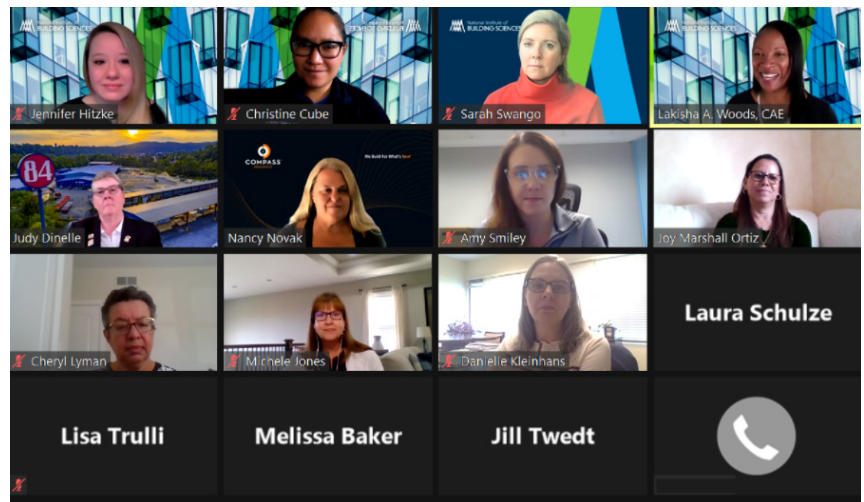
Dinelle spoke with a host of built environment C-suite members about mentorship, during a [Women Executives in Building virtual leadership meeting](#) in November. She mentioned her greatest mentor was her mother, who spent 50 years working for the same company.

"A lot of my story has to do with the team concept because of the athlete I am," she said. "Whether you're a young lady or a young man coming into this industry. Dream big. Work hard. Stay focused and surround yourself with good people. Teams function best when they have a shared purpose."

#### WOMEN IN CONSTRUCTION

According to data from the Bureau of Labor Statistics, women make up 10% of the construction workforce — 1.1 million women, compared with 9.9 million men.

"We need to get that number up," Dinelle said.



Dinelle's start in construction began with framing homes. "I walked steel, and we built them from the bottom up," Dinelle said. "It was very much a learning experience to become a tradesperson and to build the American dream of a house."

While framing a house, Dinelle remembers that women walking their kids to school would stop and ask, "Can you teach us how to do that?"

Dinelle found their interest fascinating.

"They only wanted the education," she said. "How many times do you find that? Nowadays, it's money and then the education."

#### "YOU NEED TO TALK WITH THE BOSS LADY"

The stigma of being a woman in construction is something every CEO with the Women Executives in Building virtual leadership series identifies with.

Dinelle would hear it in her early years on the jobsite, when builders and contractors would be directed to speak with

her. She would hear her crew members say, “You need to talk with the boss lady.”

And while this would confuse some men who weren’t expecting to meet with a woman on a jobsite at that time, Dinelle treated everyone the same.

“We’re all players on a team,” she said, using a sports analogy. “We all know what our positions are. We all know how to play as one. We’re all stakeholders to see our goals become reality. And we need to get more women in our industry.”

The next Women Executives in Building virtual leadership meeting on the topic of *Building Your Personal Brand* is on February 25, 2021. Meetings are open to all female C-Suite executives in the building industry, from association executives to women-owned and operated trade businesses. For more information or to join the next meeting, please visit [Women Executives in Building](#):

## COUNCIL COLUMNS

### FEMA P-2082, National Earthquake Hazards Reduction Program (NEHRP) Recommended Seismic Provisions for New Buildings and Other Structures/2020 Edition

By Mai (Mike) Tong, FEMA Physical Scientist and Project Officer

The Federal Emergency Management Agency (FEMA) recently released to the public a new resource document [FEMA P-2082](#), NEHRP Recommended Seismic Provisions for New Buildings and Other Structures/2020 Edition. This two-volume technical resource document set a milestone

in the development of next generation seismic building code provisions. Developed by the Provisions Update Committee (PUC), its ten Issue Teams at Building Seismic Safety Council (BSSC), and the Project 17 Committee the document includes the BSSC consensus approved recommendations for changes and additions to the current ASCE/SEI 7-16 Minimum Design Loads and Associated Criteria for Buildings and Other Structures. These changes are being incorporated into the upcoming ASCE/SEI 7-22, which will be adopted by 2024 International Building Code IBC and used broadly by engineers in the future.

The NEHRP Provisions plays a critical role in advancing new knowledge, research results and technologies for better and improved seismic design practice and code requirements. FEMA, as a NEHRP agency responsible for implementation of the NEHRP research results, has been funding the update of the Provisions at BSSC for ten cycles. The well administrated consensus platform and over 100 participating national experts helped to advance many major changes to the US seismic codes and standards. The 2020 NEHRP Provisions is another success in that there are 37 recommended changes covering new seismic design value maps, a new multi-period response spectra methodology, a new seismic force equation for non-structural components, coupled shear wall systems and alternate seismic design procedure for rigid wall-flexible diaphragm buildings and many other technical updates for use by ASCE/SEI 7-22.

The COVID 19 pandemic in 2020 significantly impacted and hindered our normal business. FEMA and BSSC originally planned for a public symposium to disseminate the 2020 NEHRP Provisions. This outreach event has been postponed several times. It is now rearranged as a virtual event in early 2021. We encourage interested customers and stakeholders to watch for the announcement at the [BSSC website](#) and come to the virtual symposium to learn

more about this key resource document and the relevant changes to the future national standards and model building codes.

## The Value of Disaster Planning Outweighs Its Cost — Sixfold

By Daniel Kaniewski,  
Managing Director,  
Public Sector, Marsh &  
McLennan Companies

With **natural disasters** taking an increasing toll, innovative strategies to stem future losses are needed now more than ever. Incentivizing resilience should be the next priority. Even though there are long-term benefits from investing in hazard mitigation — a key element of resilience — individuals and businesses might not choose resiliency over frugality absent an incentive to do so. In this way, we should see hazard mitigation as a shared responsibility — with shared benefits.

This year marks the 20th anniversary of the **Disaster Mitigation Act of 2000**, which made reducing disaster impacts a priority in the United States. But unlike in 2000, we now have conclusive evidence that hazard mitigation investments pay significant dividends when disasters strike. The **Natural Hazard Mitigation Saves** reports by the National Institute of Building Sciences (NIBS) have demonstrated the value of hazard mitigation in building resilience. The 2017 report found that federal mitigation grants save, on average, \$6 for every \$1 spent (up from 4:1 in the 2005 report). Emergency managers have embraced this 6:1 number as a shorthand way to make the case for hazard mitigation investments in their communities.

More recently, NIBS issued a 2019 report that further elaborated on the benefits of various hazard mitigation measures across several perils. For example, the International Code Council has long produced model building codes, but now thanks to this latest research, we know that adopting these codes saves, on average, \$11 for every \$1 invested. [READ MORE >>](#)

National Institute of BUILDING SCIENCES™		ADOPT CODE	ABOVE CODE	BUILDING RETROFIT	LIFELINE RETROFIT	FEDERAL GRANTS
<b>Overall Benefit-Cost Ratio</b>		<b>11:1</b>	<b>4:1</b>	<b>4:1</b>	<b>4:1</b>	<b>6:1</b>
<b>Cost (\$ billion)</b>		<b>\$1/year</b>	<b>\$4/year</b>	<b>\$520</b>	<b>\$0.6</b>	<b>\$27</b>
<b>Benefit (\$ billion)</b>		<b>\$13/year</b>	<b>\$16/year</b>	<b>\$2200</b>	<b>\$2.5</b>	<b>\$160</b>
<b>Riverine Flood</b>		<b>6:1</b>	<b>5:1</b>	<b>6:1</b>	<b>8:1</b>	<b>7:1</b>
<b>Hurricane Surge</b>		not applicable	<b>7:1</b>	not applicable	not applicable	not applicable
<b>Wind</b>		<b>10:1</b>	<b>5:1</b>	<b>6:1</b>	<b>7:1</b>	<b>5:1</b>
<b>Earthquake</b>		<b>12:1</b>	<b>4:1</b>	<b>13:1</b>	<b>3:1</b>	<b>3:1</b>
<b>Wildland-Urban Interface Fire</b>		not applicable	<b>4:1</b>	<b>2:1</b>	not applicable	<b>3:1</b>

Copyright © 2019 The National Institute of Building Sciences

## Send Us Your BIM Document Examples

Brought to you by the NIBS BIM Council

The National BIM Standard (NBIMS) is updating its BIM Execution Planning (BEP), BIM Use Definitions (BUD), COBie, and Core BIM Requirements (CBR) content for the AECOO industry through four workgroups. To do this work, we want to draw upon the best of the industry.

Since 2011, there have been a lot of changes in the industry. For this NBIMS effort, we are looking for the best examples of contract language, BIM execution plans, and industry templates.

Please share your best and favorite documents and templates. We are compiling information now; the deadline is January 15, 2021. Here's what we are looking for:

## CORE BIM

- BIM Requirements
- BIM Guide/Guidelines
- BIM Contract Language
- BIM Maturity Models
- BIM Implementation Roadmaps
- BIM Standards and Model Development Specifications
- Minimum Modeling Requirements Matrices

## BIM EXECUTION PLANNING

- BIM Execution Plan (BEP) templates or examples
- Contract language regarding the requirements for submitting BEPs
- Language for BEP development

## BIM USES

- Commonly established BIM Uses with characteristics of the use (e.g., description, potential value, participants, references, resources required, etc.)
- Example of project types BIM Uses (market sector, construction type, etc.)

Please send documents to Dominique Fernandez ([dfernandez@nibs.org](mailto:dfernandez@nibs.org)), or send a link that allows us to download from your website. [READ MORE >>](#)

## NIBS IN THE NEWS

### ENGINEERING NEWS-RECORD

#### NEHRP RECOMMENDATIONS LIKELY TO IMPROVE SEISMIC DESIGN

Code-based earthquake engineering is on the verge of getting simpler, thanks to the National Earthquake Hazards Reduction Program's recommendation to replace the traditional seismic hazard maps with an improved seismic hazards database. The recommendation is one of the most significant changes put forth in the 2020 update

of the NEHRP seismic design provisions, which are the foundation for the prescriptive seismic design code for buildings and other structures. [READ MORE >>](#)

### STRONGER BY ASSOCIATION PODCAST

#### FEMALE ASSOCIATION LEADERS DISCUSS THE WORK AHEAD TO FUEL RECOVERY

NIBS CEO Lakisha A. Woods, CAE, spoke with ASAE Stronger By Association podcast host Mary Kate Cunningham, CAE, about NIBS' work for the built environment. Tune in to the segment or read more about it on the NIBS Blog. [READ MORE >>](#)

### BUILDING ENCLOSURE

#### NIBS PARTNERS WITH ASC TO ADVANCE SEALANTS RESOURCES

The National Institute of Building Sciences has partnered with The Adhesive and Sealant Council (ASC) through an official memorandum of understanding that will help both organizations connect the full value chain from manufacturer to end users with guidance on sealant technology in vertical wall assemblies. Initial efforts will center on repositioning and revising the sealants section of the Building Enclosure Design Guide section of the Whole Building Design Guide (WBDG). [READ MORE >>](#)

### BOSTON REAL ESTATE TIMES

#### BUILDING SEISMIC SAFETY COUNCIL UPDATES EARTHQUAKE DESIGN PROVISIONS FOR FEMA

The National Institute of Building Sciences Building Seismic Safety Council (BSSC) recently updated seismic provisions for the National Earthquake Hazards Reduction Program (NEHRP). The 2020 NEHRP Provisions (FEMA P-2082) were developed by BSSC and published by the Federal Emergency Management Agency as part of an ongoing program to advance national seismic design standards



and model building codes. Building codes regulate the design, construction, alteration, and maintenance of buildings and other structures. [READ MORE >>](#)

## GOVERNING

### HOW BETTER BUILDING CODES CAN MITIGATE WILDFIRES' DEVASTATION

As climate change brings warmer temperatures and dryer winters, the consequences of wildfires are not only more devastating, but the fire season is now months longer across much of the West. California officials recently reported surpassing four million acres burned this year, more than double the state's previous record set in 2018.

[READ MORE >>](#)

## INFORMED INFRASTRUCTURE

### NIBS REBRANDS COUNCIL TO FOCUS ON BUILDING INFORMATION MANAGEMENT

The National Institute of Building Sciences has rebranded the buildingSMART alliance to the Building Information Management Council to emphasize its role in the development and deployment of national information management standards and processes.

The BIM Council focuses on all aspects of BIM and how technology impacts the built environment to benefit asset owners and the architects, contractors, engineers and suppliers who build, manage and operate facilities across the nation. [READ MORE >>](#)

## OBSERVANCES

- |                       |   |
|-----------------------|---|
| <b>February 11</b>    | International Day of Women and Girls in Science |
| <b>February 21-27</b> | National Engineers Week                         |
| <b>March 4</b>        | World Engineering Day                           |
| <b>March 5</b>        | Employee Appreciation Day                       |
| <b>March 8</b>        | International Women's Day                       |
| <b>March 8-14</b>     | Women of Aviation Worldwide Week                |
| <b>March 11</b>       | World Plumbing Day                              |
| <b>March 22</b>       | World Water Day                                 |

## EVENTS

- |                        |   |
|------------------------|---|
| <b>February 25</b>     | Women Executives in Building virtual series: Building Your Personal Brand |
| <b>September 27-29</b> | Building Innovation 2021  |



## FIND US ONLINE

**WOMEN SUPPORTING WOMEN IN THE BUILT ENVIRONMENT – AND BEYOND**

[READ MORE >>](#)

**NIBS SUPPORTS BIPARTISAN HOUSE BILL TO PROTECT COMMUNITIES FROM FUTURE FLOOD DISASTERS**

[READ MORE >>](#)

**NIBS PARTNERS WITH ASC TO ADVANCE SEALANTS RESOURCES ON THE WHOLE BUILDING DESIGN GUIDE**

[READ MORE >>](#)

**BUILDING SEISMIC SAFETY COUNCIL UPDATES EARTHQUAKE DESIGN PROVISIONS FOR FEMA**

[READ MORE >>](#)

**NIBS REBRANDS COUNCIL TO FOCUS ON BUILDING INFORMATION MANAGEMENT**

[READ MORE >>](#)

**84 LUMBER COMPANY AND NIBS COLLABORATE TO CELEBRATE WOMEN LEADERS IN THE BUILDING INDUSTRY**

[READ MORE >>](#)

**FAUCI: NOW'S THE TIME TO DOUBLE DOWN ON PUBLIC HEALTH MEASURES**

[READ MORE >>](#)

**BUILT ENVIRONMENT LEADERS: SOCIAL EQUITY AND DIVERSITY STARTS AT THE TOP**

[READ MORE >>](#)

# DELL Technologies

## TOTAL IT SOLUTIONS FOR YOUR BUSINESS

Members save an additional 5%



Visit [Dell.com/NIBS](https://Dell.com/NIBS) to receive your coupon or call 800-757-8442 to speak with a small business tech advisor and reference your NIBS membership



 National Institute of BUILDING SCIENCES™

10th Gen  
Core i5 vPro

